

State of Wyoming Corner Record

(In compliance with the *CORNER PERPETUATION AND FILING ACT*, Wyoming Statutes, 1997 Section 33-29-140 et. se., and the Rules and Regulations of the Board of Professional Engineers and Professional Land Surveyors)

Reverse side of this form may be used if more space is needed.

Record of original survey and citation of source of historical information (if corner is lost or obliterated). Description of corner monumentation evidence found and/or monument and accessories established to perpetuate the location of this corner. Sketch of relative location of monument, accessories, and reference points with course and distance to adjacent corner(s) (if determined in this survey). Method and rationale for re-establishment of lost or obliterated corner.

RECORD: Laramie County Corner Record, Recp # 569403, Book 2221, Page 1098 on 5/26/2011 by PLS #10368, Rodney A. Walters.

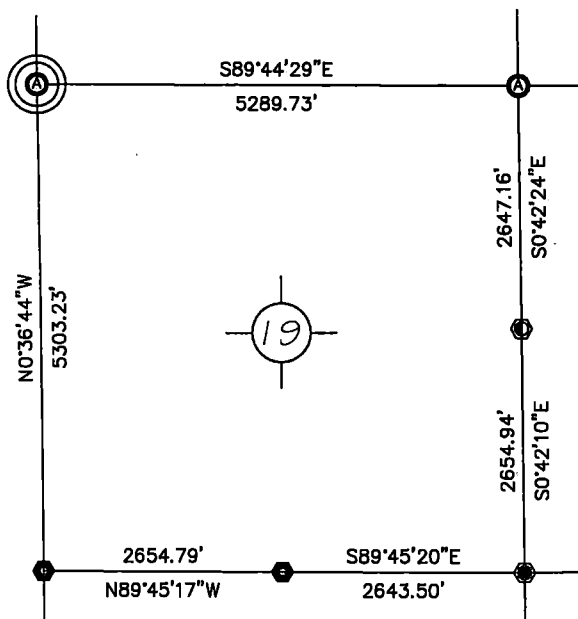
FOUND: 3.2 inch aluminum cap on 2.75 inch aluminum post, cap is 0.2 ft. below ground, by PLS #10368, Rodney A. Walters. Note: some lettering on cap is reversed.

Re-monumentation: Nothing required

NOTE:
COORDINATES SHOWN ARE BASED UPON
NAD83 WY EAST ZONE AND NAVD 88
VERTICAL DATUM USING GEOID 12B
FROM HARN NGS PID# MN0253 "D50"

Point #	North	East	Elev.
1762242	341345.23	908334.05	5470.52

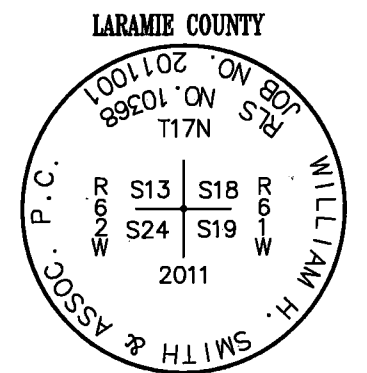
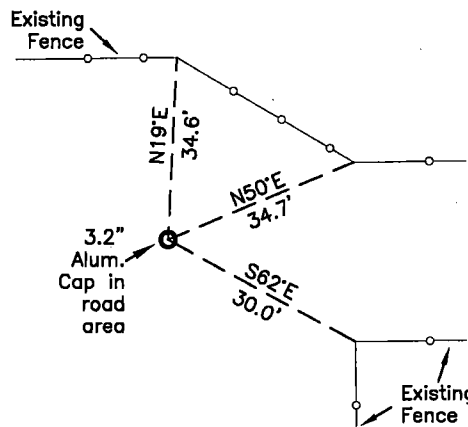
NOTE:
BEARINGS AND DISTANCES SHOWN HEREON ARE
BASED UPON GRID USING NAD83 WYOMING EAST
ZONE AND TRIMBLE R8 GPS OBSERVATION



SKETCH

Monument Location

corner referenced this record =



Monument Inscription

Date of Field Work: Oct. 8, 2019

Office Reference: DRG-21970, Pt.1762242

Cross Index Plat

1	2	3	4	5	6	7	8	9	10	11	12	13	14	15	16	17	18	19	20	21	22	23	24	25	
A	+	+	+	+	+	+	+	+	+	+	+	+	+	+	+	+	+	+	+	+	+	+	+	+	A
B	6	5	4	3	2	1	+	+	+	+	+	+	+	+	+	+	+	+	+	+	+	+	+	+	B
C	+	+	+	+	+	+	+	+	+	+	+	+	+	+	+	+	+	+	+	+	+	+	+	+	C
D	+	+	+	+	+	+	+	+	+	+	+	+	+	+	+	+	+	+	+	+	+	+	+	+	D
E	+	+	+	+	+	+	+	+	+	+	+	+	+	+	+	+	+	+	+	+	+	+	+	+	E
F	+	+	+	+	+	+	+	+	+	+	+	+	+	+	+	+	+	+	+	+	+	+	+	+	F
G	7	8	9	10	11	12	+	+	+	+	+	+	+	+	+	+	+	+	+	+	+	+	+	+	G
H	+	+	+	+	+	+	+	+	+	+	+	+	+	+	+	+	+	+	+	+	+	+	+	+	H
J	+	+	+	+	+	+	+	+	+	+	+	+	+	+	+	+	+	+	+	+	+	+	+	+	J
K	+	+	+	+	+	+	+	+	+	+	+	+	+	+	+	+	+	+	+	+	+	+	+	+	K
L	18	17	16	15	14	13	+	+	+	+	+	+	+	+	+	+	+	+	+	+	+	+	+	+	L
M	+	+	+	+	+	+	+	+	+	+	+	+	+	+	+	+	+	+	+	+	+	+	+	+	M
N	+	+	+	+	+	+	+	+	+	+	+	+	+	+	+	+	+	+	+	+	+	+	+	+	N
O	+	+	+	+	+	+	+	+	+	+	+	+	+	+	+	+	+	+	+	+	+	+	+	+	O
P	19	20	21	22	23	24	+	+	+	+	+	+	+	+	+	+	+	+	+	+	+	+	+	+	P
Q	+	+	+	+	+	+	+	+	+	+	+	+	+	+	+	+	+	+	+	+	+	+	+	+	Q
R	+	+	+	+	+	+	+	+	+	+	+	+	+	+	+	+	+	+	+	+	+	+	+	+	R
S	+	+	+	+	+	+	+	+	+	+	+	+	+	+	+	+	+	+	+	+	+	+	+	+	S
T	30	29	28	27	26	25	+	+	+	+	+	+	+	+	+	+	+	+	+	+	+	+	+	+	T
U	+	+	+	+	+	+	+	+	+	+	+	+	+	+	+	+	+	+	+	+	+	+	+	+	U
V	+	+	+	+	+	+	+	+	+	+	+	+	+	+	+	+	+	+	+	+	+	+	+	+	V
W	+	+	+	+	+	+	+	+	+	+	+	+	+	+	+	+	+	+	+	+	+	+	+	+	W
X	+	+	+	+	+	+	+	+	+	+	+	+	+	+	+	+	+	+	+	+	+	+	+	+	X
Y	31	32	33	34	35	36	+	+	+	+	+	+	+	+	+	+	+	+	+	+	+	+	+	+	Y
Z	+	+	+	+	+	+	+	+	+	+	+	+	+	+	+	+	+	+	+	+	+	+	+	+	Z
1	2	3	4	5	6	7	8	9	10	11	12	13	14	15	16	17	18	19	20	21	22	23	24	25	

Firm/Agency, Address

this corner record provided by:

**HAMILTON
LAND
SURVEYING**

UNDER CONTRACT TO:

DRG **RIFFIN & ASSOCIATES, INC.**

1414 ELK ST., SUITE 202
ROCK SPRINGS, WY 82901
(307) 362-5028

This corner record was prepared by me or under my direction and supervision.

SEAL & SIGNATURE



RECP #: 769457
RECORDED 1/15/2020 AT 2:02 PM BK# 2655 PG# 1746
Debra K. Lee, CLERK OF LARAMIE COUNTY, WY PAGE 1 OF 1

STATE of WYOMING, Office of Clerk & Recorder, County of Laramie
this block provided for county filing documentation

Corner Name: Northwest , Section: 19 , T 17N , R 61W , 6th P.M. , Cross-Index No.: N-01

SBRPEPLS/PLSW: March 1994; PLSW: January 1998

County: LARAMIE , Wyoming